

- (1) LEASE LINE
 (2) MALL BULKHEAD ABOVE
 (3) NEUTRAL PIER TO REMAIN
 (4) CENTER LINE OF EXISTING ROLLING GRILLE
 (5) (E) TEMPERED GLAZING TO REMAIN.
 (6) STOREFRONT CONSTRUCTION. G.C. TO PATCH, REPAIR AS NECESSARY.
 (7) (E) STOREFRONT CONSTRUCTION. G.C. TO PATCH, REPAIR, AND REPAINT [P-58(N)]
 (8) (N) LIGHTBOX TOWER FIXTURE.
 (9) (N) MARKETING GRID ABOVE SHOWN DASHED. SEE H/411/1
 (10) (N) CURTAIN AND TRACK
 (11) (N) VSS SIGNAGE - REFER TO DETAIL H/411/1 ON A06.1
 (12) (N) DOG W/IN VINYL APPLIED TO MALL SIDE OF GLASS. CLEAN & PREPARE (E) GLASS AS NECESSARY PRIOR TO INSTALLATION.
 (13) (N) VSS RIBBON STRIPED VINYL APPLIED TO TENANT SIDE OF GLASS. CLEAN AND PREPARE (E) GLASS AS NECESSARY PRIOR TO INSTALLATION.
 (14) (N) 2K PINK DOT VINYL APPLIED TO TENANT SIDE OF GLASS. CLEAN AND PREPARE (E) GLASS AS NECESSARY PRIOR TO INSTALLATION.
 (15) (N) PINK GOLFLEAF VINYL WINDOW GRAPHIC APPLIED TO TENANT SIDE OF GLASS, CENTERED ON WINDOW. FINISH TRANSITION LINE BETWEEN VSL AND PINK - TBD
 (16) (N) TWO-SIDED CURTAIN W/ BLACK ON VSL ROOM SIDE AND HOT PINK ON THE DISPLAY WINDOW SIDE. REFER TO H/411/1
 (17) DOT WALLCOVERING IN DISPLAY WINDOW - SEE ELEVATIONS ON A07.X. [WC-31]
 (18) MARKETING PIPE RAIL, G.C. TO PAINT REFER TO DETAIL K/410.1. [P-64]
 (19) VSS SIGNAGE - 1/4" THICK SURFACE MOUNTED POLISHED ALUMINUM LETTERS ADHERED TO GLASS. SIZE AS INDICATED IN ELEV.
 (20) EXISTING GLASS TO BE BACK PAINTED BLACK [P-58]
 (21) EXISTING GLASS TO BE BACK PAINTED POLKA PINK [P-60]
 (22) PINK SIGNAGE - WOOD PLANK SIGN PANEL, SIZE AS INDICATED IN DETAIL H/408.2. HORIZONTAL PLANKS TO HAVE PRE-PAINTED DISTRESSED PINK BACKGROUND AND PRE-PAINTED 65% "LIFE IS" AND "IS LIFE" AND 15% "VICTORIA'S SECRET" LOGO. 100% NON-ILLUMINATED "PINK" LETTERS TO BE SURFACE MOUNTED.
 (23) NOT USED.

DEMOLITION

20 REMOVE ALL EXISTING VINYL FROM BACK OF GLASS.
PREP FOR NEW FINISH.

31 REMOVE EXISTING SURFACE APPLIED 'VICTORIA'S SECRET'
LETTERS FROM FACE OF GLASS.

32 REMOVE EXISTING SIGNAGE AND GLASS. EXISTING
MULLION SYSTEM TO REMAIN, PROTECT. PREPARE
OPENING FOR NEW SIGNAGE.

NOT USED

1 1/2" = 1'-0"

S

NEW PINK SIGNAGE

1 1/2" = 1'-0"

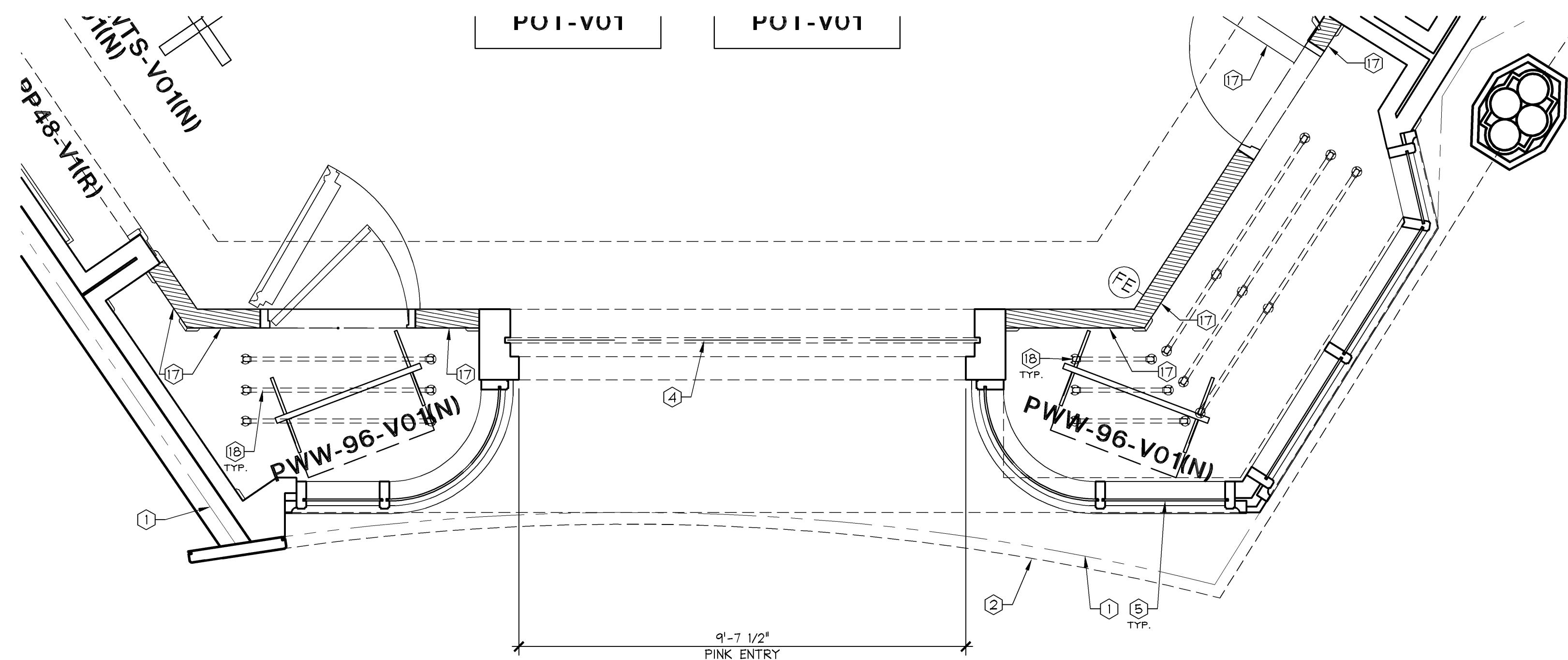
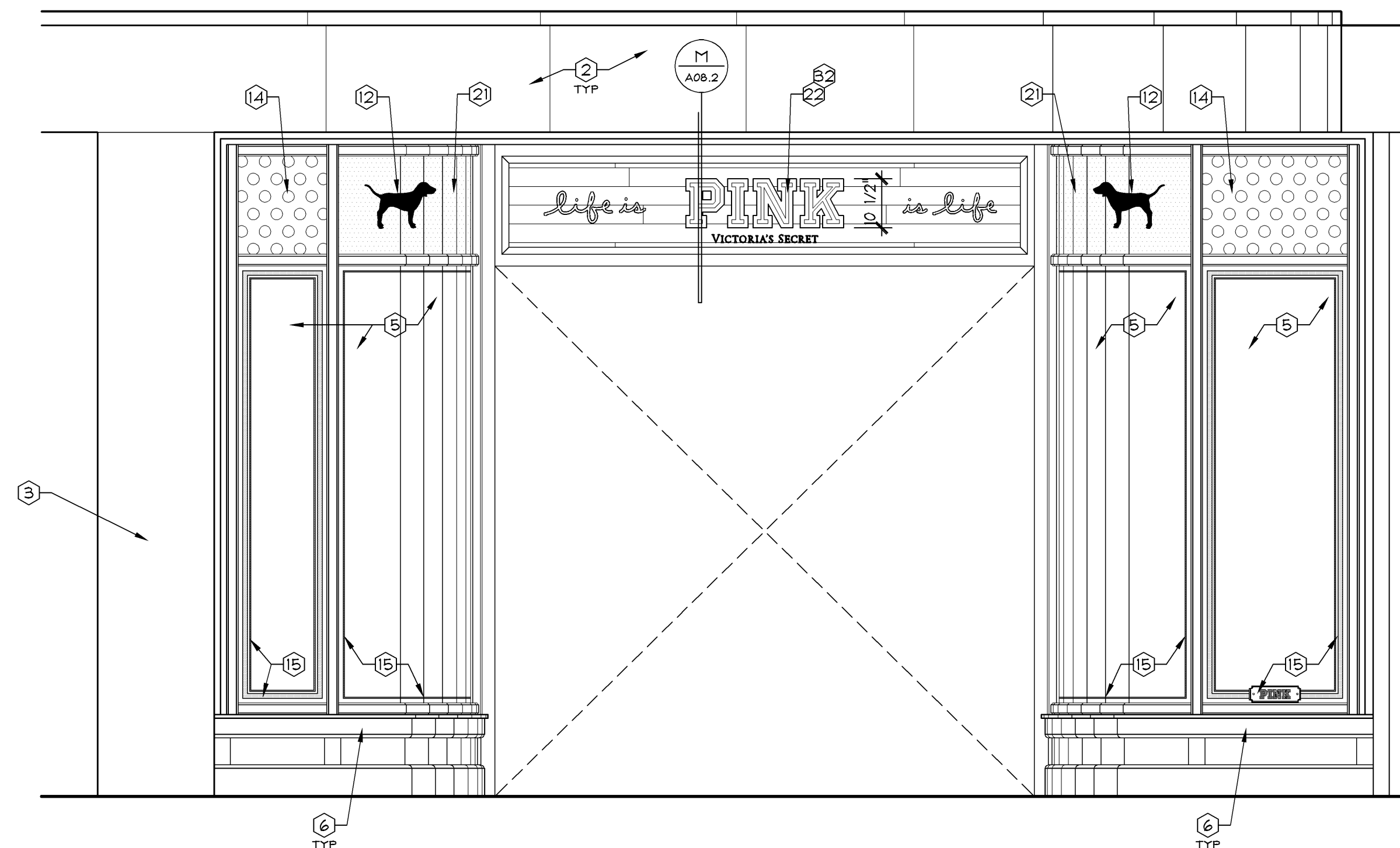
05D-A081-H00-DETL

M

STOREFRONT KEY NOTES

1/2" = 1'-0"

D



STOREFRONT ELEVATION

1/2" = 1'-0"

A

 **Stantec**
Stantec Architecture Inc.
1383 N. McDowell Blvd., Suite 250
Petaluma, CA U.S.A. 94954

Tel. 707.765.1660 Fax 707.765.9908
www.stantec.com



Limited brands

LIMITED STORE PLANNING, INC.
d/b/a STORE DESIGN & CONSTRUCTION
Three Limited Parkway • Columbus, Ohio 43230
Telephone: 614.415.7000 • Fax: 614.415.7349

[illegible]

PROJECT INFORMATION: 010500485

VICTORIA'S SECRET

CAROLINA PLACE
11025 CAROLINA PLACE PKWY
SPACE B-14
PINEVILLE, NC 28134

SCOPE:	REFRESH	PACKAGE:
DESIGN TYPE:	NMA/ANGELS	GENERATION:
LSD&C PROJECT #:	00059286	A/E PROJECT #:

REVISIONS:

ELITE CONSTRUCTION GROUP
LAKE JACKSON, TX
PHONE: 979-285-0712
NOTE: THESE PRINTS HAVE BEEN
REDUCED BY 50 PERCENT. SCALE
WILL BE 50 PERCENT OF WHAT
NOTED ON PLANS

DATE ISSUED: 9/26/14
DESIGNED BY: KW
DRAWN BY: CW
CHECKED BY: DB

STOREFRONT ELEVATION

DRAWING NUMBER:

A08.2